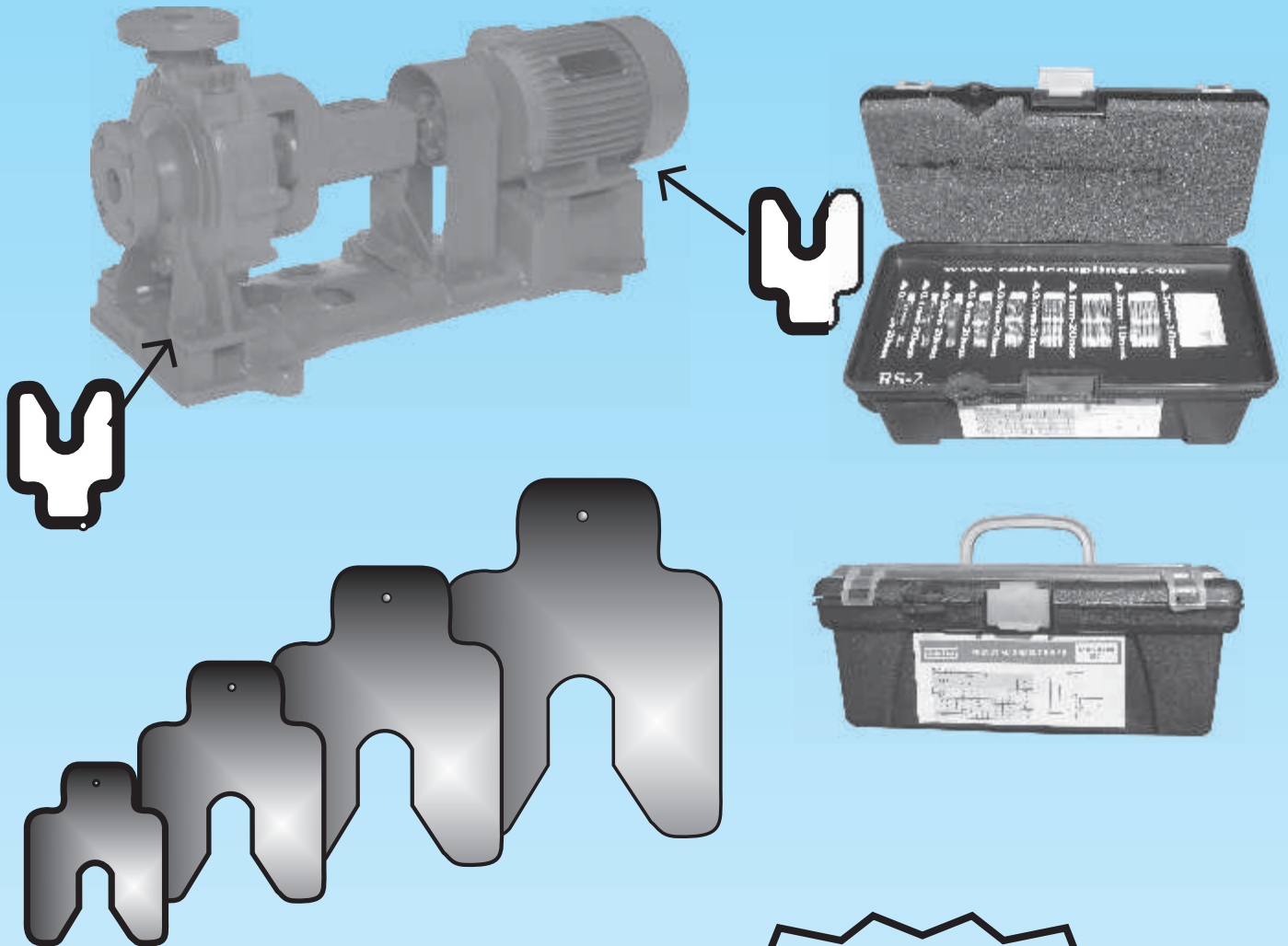




During installation of rotating equipment shaft alignment is important. Shims play a crucial role in positioning accuracy of the equipment. Lack of shim of proper size and thickness during installation may lead to less than optimal support for the equipment feet during operation. This can lead to vibration and ultimately, to unplanned breakdowns and enormous downtime expenses.



Save Alignment time,  
Avoid failures and downtime,  
Save money

## FEATURES

- Six different sizes in nine different thickness
- Perfectly flat for stable, consistent machine support.
- Fully deburred to avoid cuts.
- Permanent marking provides easy identification at glance.
- Corrsion resistant stainless steel material withstands acids and alkali.
- Save a lot of time, labour & money which are wasted by hand cut shims.
- Accurate alignment improves equipment performance & hence it's reliability.

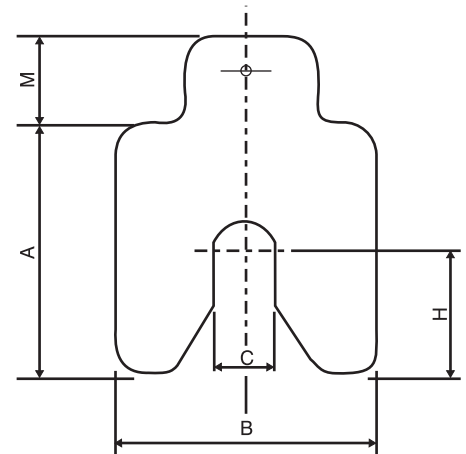


**ADVANTAGE OF PRECUT SHIMS OVER HAND CUT SHIMS:**

<b>HAND CUT SHIMS</b>	<b>PRECUT SHIMS</b>
Sheets are to be stored-inventory	Sheets are not required
Process : Locate material, mark it, cut, deburr & flatten it	Ready to use
Improper Processing -Inaccurate alignment	Accurate alignment
Danger of injury when cutting & inserting sharp edged shims	Safe as these are deburred
No hole in Shim tab	Hole in Shim tab makes insertion & removal easier

**DIMENSIONAL DATA:**

TYPE	SIZE			C	H	M	STD. THICKNESSES
	A	X	B				
RS 1	40	X	40	13	20	16	0.05, 0.10, 0.20, 0.40, 0.50, 0.70, 1.0, 2.0, 3.0
RS 2	50	X	50	17	25	18	
RS 3	75	X	75	21	37.5	18	
RS 4	100	X	100	27	50	25	
RS 5	125	X	125	45	62.5	30	
RS 6	200	X	200	55	100	30	



**PACKING :**

**A. INDIVIDUAL PACKING (Shim Kit):**

TYPE / SIZE	0.05	0.1	0.2	0.4	0.5	0.7	1	2	3
All	10	10	10	10	10	10	10	10	10

**B. SHIM CASE (SC):**

SIZE	THICKNESS									TOTAL/ BOX
	0.05	0.1	0.2	0.4	0.5	0.7	1	2	3	
RSC-1	20	20	20	20	20	20	20	10	0	150
RSC-2	20	20	20	20	20	20	20	10	0	150
RSC-3	20	20	20	20	20	20	20	10	0	150
RSC-4	20	20	20	20	20	20	20	10	0	150
RSC-5	10	10	10	10	10	10	10	10	0	80
RSC-6	10	10	10	10	10	10	10	10	0	80

All dimensions are in mm.



**ALLIED INDIA CORPORATION**  
D2-19,Raj Garden, Sr.no - 43, A/1, Kondhwa Khurd  
Pune 411048 (M.S) INDIA.  
Telephone: +(91)-(20)-32326635 Mobile No: +(91)- 09604374540  
Fax: +(91)-(20)-26930130  
Email Id : [info@aicwbiz.com](mailto:info@aicwbiz.com), [interlinks\\_aic@hotmail.com](mailto:interlinks_aic@hotmail.com)  
Website : [www.aicwbiz.com](http://www.aicwbiz.com)

Distributor