



### Features -

Polyurethane Sleeve compounds provide excellent torsional vibration dampening; absorb load pulsations and minimize drive line shock. This sleeve design allows the coupling to act as a predictable fuse in the system.

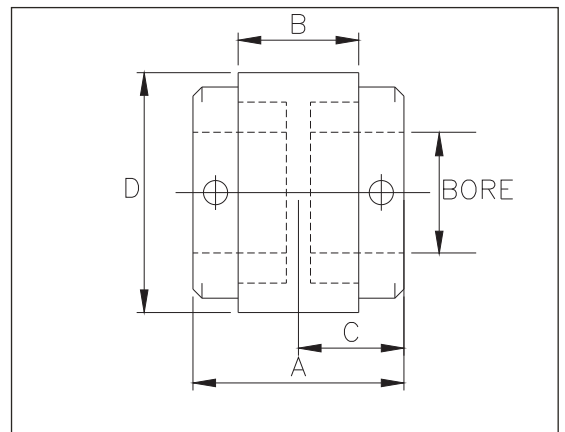
Minimum backlash.

Coupling length can be varied to meet application requirements.

Non-Corrosive metal ends and rubber compounds are not affected by moisture, dirt and abrasives. No lubrication, adjustments or maintenance is required. No metal-to-metal contact even when the coupling shears.

Compact, small diameter coupling with low moment of inertia.

Temperature range from -25 C to + 100 C.



### TECHNICAL DATA

Coupling Size	Rated Torque N-m	kW at 100 rpm	Max. Speed rpm	Bore Size		Dimensions			
				Min.	Max.	A	B	C	D
RP-43	13.6	0.14	3500	9.5	22	60.5	40	29	47
RP-56	40.6	0.43	3500	12	30	63.5	40	30	55
RP-66	61.0	0.64	3500	12	35	70	40	33	78.5

- All dimensions are in mm.
- In view of our constant endeavour to improve the quality of our products, we reserve the right to alter or change specifications without prior notice.



**ALLIED INDIA CORPORATION**  
D2-19, Raj Garden, Sr.no - 43, A/1, Kondhwa Khurd  
Pune 411048 (M.S) INDIA.  
Telephone: +(91)-(20)-32326635 Mobile No: +(91)- 09604374540  
Fax: +(91)-(20)-26930130  
Email Id : [info@aicwbiz.com](mailto:info@aicwbiz.com), [interlinks\\_aic@hotmail.com](mailto:interlinks_aic@hotmail.com)  
Website : [www.aicwbiz.com](http://www.aicwbiz.com)

Distributor